

MSA Latchways Mini PFL

Personal Fall Limiter - Impressive innovation in a compact size



MSA Latchways **Mini PFL (Personal Fall Limiter)**

Suitable for multiple applications, the 1.8 m Mini PFL is designed specifically for environments where close anchorage is available.

Compact and Versatile

The MSA Latchways Mini PFL is the most compact & lightweight self-retracting lanyard ever developed using multiple spring radial energy-absorbing technology. This new design eliminates the need for an external energy-absorber outside of the housing making it the smallest personal fall limiter on the market.

Reliable and Reassuring

Latchways' Lifecycle Warranty means users can work at height with confidence that the Mini PFL will continue to provide safety when it matters most. The product offers fall arrest and restraint for users 60 to 140 kg including tools.



MSA Latchways Single-Leg Mini PFL

The world's first self-retracting lifeline with multiple spring radial energy-absorbing technology

- Integral energy absorber
- Requires zero recalibration or adjustment
- The energy absorber is completely sealed from external contaminants

Free range of motion

A fully rotating attachment point for complete flexibility - both 360° and 180°

Precision engineering

A structurally reinforced pawl mechanism

Highly durable

A polycarbonate case houses the SRL, and its transparency allows for easy visual inspection of critical internal components

Superior materials

Components manufactured from high-grade stainless steel and engineered plastics



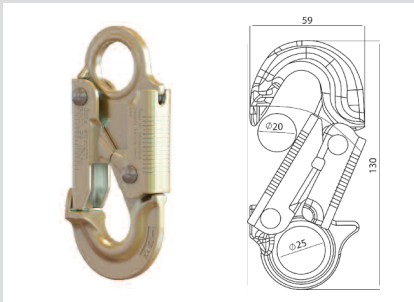
MSA Latchways Twin Mini PFL

The MSA Latchways Twin Mini PFL uses a TwinLink to connect two Mini PFLs.

This lightweight attachment allows the configuration to provide all the features of a Mini PFL, with greater mobility and continuous attachment, whilst working on complex structures.

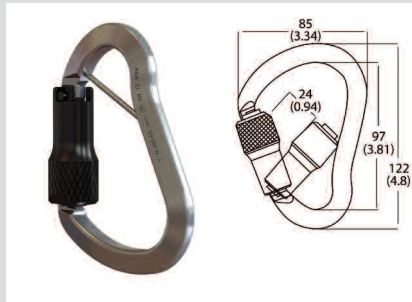
Available Connectors

The MSA Latchways Mini PFL is supplied with a choice of steel or aluminium top carabiner and has a range of connectors available.



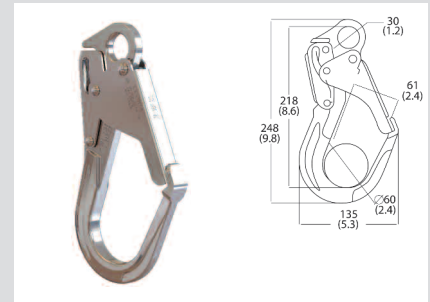
Forged Steel Snaphook

- High-tensile steel material
- Zinc-plated finish
- EN, ANSI and CSA compliant



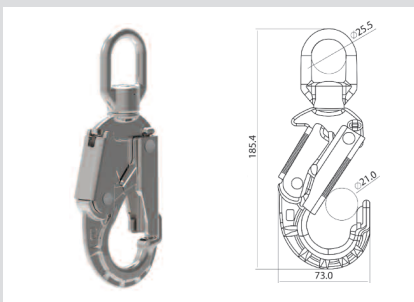
Carabiner/Hook

- Triple-locking gate
- Aluminum alloy
- EN, ANSI and CSA compliant



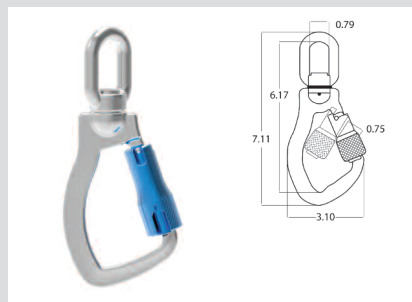
Aluminum Scaffold Hook

- Aluminum alloy
- EN, ANSI and CSA compliant



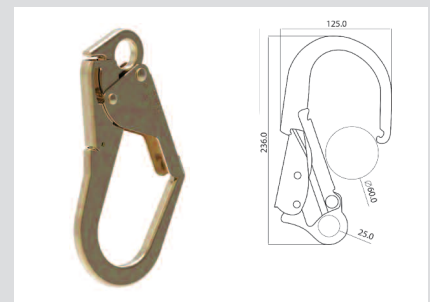
Forged Steel Swivel Snaphook

- Double-action/self-locking gate
- High-tensile steel material
- Zinc-plated finish
- EN, ANSI and CSA compliant



Swivel Carabiner/Hook

- Triple-locking gate
- Aluminum alloy
- EN, ANSI and CSA compliant



Steel Scaffold Hook

- High-tensile steel material
- Zinc-plated finish
- EN, ANSI and CSA compliant

Standards

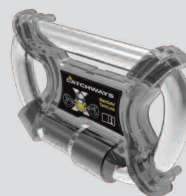
The MSA Latchways Mini PFL has a highly durable polycarbonate, clear casing which allows for easy visual inspection of the critical internal components. It can withstand temperatures ranging from -40° to +54°C and its high-performing, high-strength webbing lifeline has been manufactured to the highest standard in accordance to Latchways' strict quality-control procedures. The MSA Latchways Mini PFL has been tested to meet these relevant standards:

- EN360: 2002
- ANSI Z359.14 – 2012
- OSHA 1910.66
- OSHA 1926.502
- CSA Z259.2.2-98

Ordering Information

Part No.	Single-Leg	Twin-Leg	Length	Anchorage connection	Harness connection
63011-00AEU	■		1.8 m	Aluminium scaffold hook	Steel carabiner
63011-00BEU	■		1.8 m	Steel snaphook	Steel carabiner
63011-00CEU	■		1.8 m	Aluminum swivel carabiner	Steel carabiner
63011-00DEU	■		1.8 m	Aluminum carabiner	Steel carabiner
63011-00EEU	■		1.8 m	Steel swivel hook	Steel carabiner
63011-00FEU	■		1.8 m	Steel scaffold hook	Steel carabiner
63011-00GEU	■		1.8 m	Aluminium scaffold hook	-
63011-00HEU	■		1.8 m	Steel snaphook	-
63011-00IEU	■		1.8 m	Aluminum swivel carabiner	-
63011-00JEU	■		1.8 m	Aluminum triple-lock carabiner	-
63011-00KEU	■		1.8 m	Steel swivel hook	-
63011-00LEU	■		1.8 m	Steel scaffold hook	-
63011-00MEU	■		1.8 m	Aluminium scaffold hook	Aluminum triple-lock carabiner
63011-00NEU	■		1.8 m	Triple-lock carabiner	Triple-lock carabiner
63011-00OEU	■		1.8 m	Steel snaphook	Steel scaffold hook
63011-00PEU	■		1.8 m	Aluminium triple-lock carabiner	Aluminium scaffold hook
63111-00AEU		■	1.8 m	Aluminium scaffold hook	TwinLink connector
63111-00BEU		■	1.8 m	Steel snaphook	TwinLink connector
63111-00CEU		■	1.8 m	Aluminum swivel carabiner	TwinLink connector
63111-00DEU		■	1.8 m	Aluminum triple-lock carabiner	TwinLink connector
63111-00EEU		■	1.8 m	Steel swivel hook	TwinLink connector
63111-00FEU		■	1.8 m	Steel scaffold hook	TwinLink connector

Part No.	
63900-04	TwinLink Connector for Mini PFL



Your direct contact

MSA Great Britain
Lochard House, Linnet Way
Strathclyde Business Park
Bellshill ML4 3RA
Phone +44 (0)1698 573357
info.gb@MSAsafety.com

Corporate Headquarters:
MSA
1000 Cranberry Woods Drive
Cranberry Township, PA 16066, USA
Phone +1-724-776-8600
info.us@MSAsafety.com

Design Center:
Latchways plc
Hopton Park, Devizes
Wiltshire, SN10 2JP, England
Phone +44 (0)1380 732700
info@latchways.com